

SHIN-ETSU INTER-CONNECTOR

W(Wide)-VCF TYPE

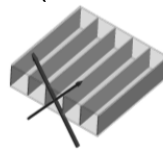
W-VCF16512000-PC200

(Outline)

Feature

- The viewing angle of W-VCF is 120°. It is wider than standard VCF.
- Because the viewing angle is wide, the pitch of the shading layer is large. It is "0.165 mm".

VCF (Standard VCF)

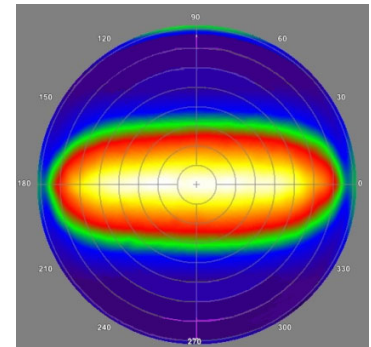
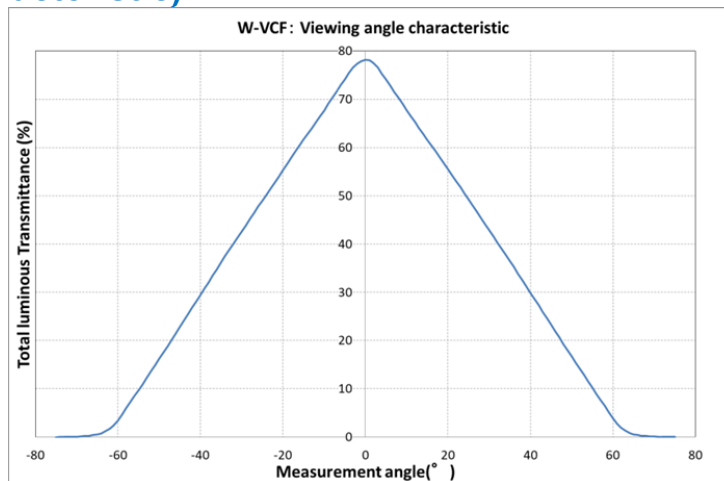


W-VCF



- Feature with wide shading layer pitch: With the interval in "Thing to be checked visually" and "VCF", the ghost image is suppressed. (The ghost image)
 - It is generated because the louver film functions as a diffraction grating.
 - When the shading layer pitch is 0.1 mm or less, the generation is remarkable.
- The following specification is possible.
 - ✧ Viewing angle from usually to 120°
 - ✧ Louver with angle of gradient.
 - ✧ Crossing louver using two louvers.

(Characteristic)



Issue /Shin-Etsu polymer Co., Ltd.

JapanTEL:+(81)-3-5288-8411

<https://www.shinpoly.co.jp/en/product/product/vcf/vcf.html>

This technical report describes VCF type with reference to the most commonly used sizes, and describes view control film's characteristics as measured by our test methods through the use of our facilities. The data and information contained in this report are only examples of measurements. Shin-Etsu Polymer does not guarantee the quality or the performance of VCF type has been incorporated into your products. The characteristic of the VCF may fluctuate according to the surrounding material used, and the lighting conditions. All VCFs should be tested under your conditions to ensure your products prior to production. This report does not guarantee propriety rights or patents for the use of VCFs.