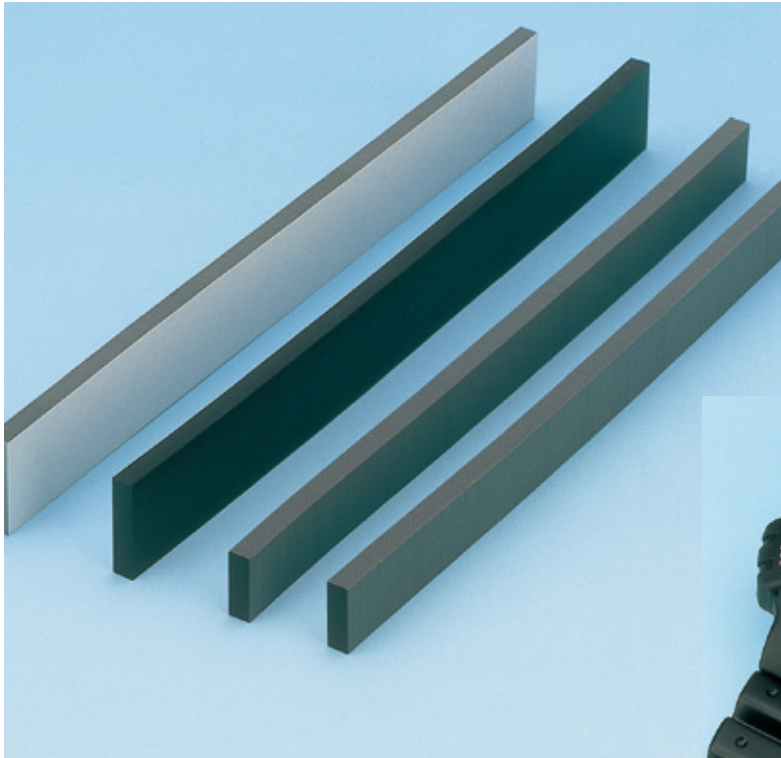


Shin-Etsu Inter-Connector®

S TYPE

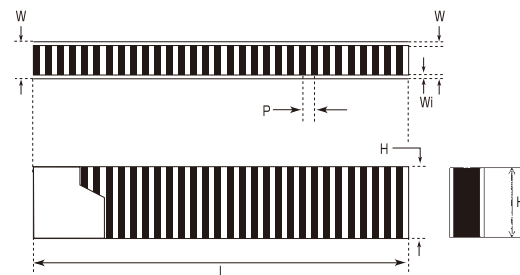
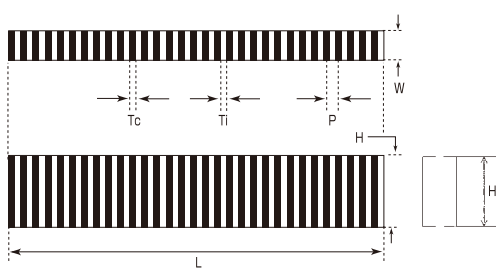


FEATURES

S-type Inter-Connector consists of alternate layers of conductive and insulation silicone rubber. This compression-type connector makes "random connection" possible with high reliability. This type of connector is applicable for the small-sized display used in watch or camera.



OUTLINE DIMENSIONS



DIMENSIONS AND TOLERANCES

Item		Unit	0.05 P type	0.10 P type	0.18 P type	0.25 P type
Pitch	P	mm	0.05±0.03	0.10±0.04	0.18±0.05	0.25±0.05
Length	L	mm	1.0~5.0±0.1	5.1~30.0±0.2	30.1~70.0±0.3	
			70.1~120.0±0.4	120.1~200.0±0.6	200.1~300.0±0.8	
Height*	H	mm	0.8~5.0±0.1		5.1~25.0+0.15/-0.1	
Width without coat			0.2~5.0±0.08			
Width with coat	W	mm	0.3~5.1±0.1			
Width of Insulation coat	Wi	mm	0.05±0.03			

* $H \geq W/2$

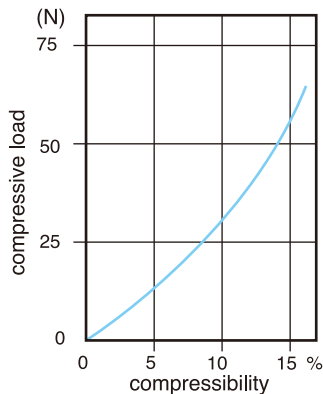
Shin-Etsu Inter-Connector has been registered in European Community, TM No. 000299016, and in the United States of America, TM No. 2078941.

BASIC PROPERTIES

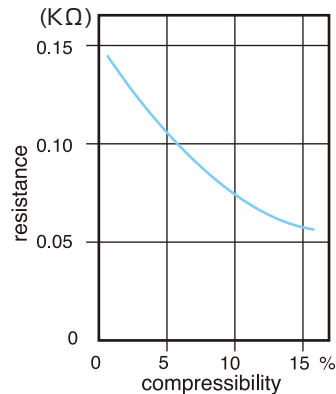
Item	Component	Unit	0.05 P type	0.10 P type · 0.18 P type · 0.25 P type
Specific gravity	Insulator		1.15	1.15
	Conductor		1.15	1.25
	Insulated both sides		1.15	1.15
Shore hardness A	Insulator	ISO7619 (TYPE A)	65~73	65~73
	Conductor		60~65	63~67
	Insulated both sides		65~73	65~73
Compression set	※	%	15~20	15~20
Volume resistivity	Insulator	$\Omega \cdot \text{cm}$	1×10^{14}	1×10^{14}
	Conductor		1.3	3~6
	Insulated both sides		1×10^{14}	1×10^{14}
Dielectric breakdown voltage	Insulator	kV/mm	23~27	23~27
	Insulated both sides		20~23	20~23
Insulation resistance(500V DC)	※	M Ω	$1 \times 10^3 \leq$	$1 \times 10^3 \leq$
Operating temperature range		°C	-25~85	-25~85

*The test is carried out with Shin-Etsu's own method.

COMPRESSION CURVES



sample size:0.10P×20.0L×2.4H×2.0W



sample size:0.10P×20.0L×2.4H×2.0W
 electrode used: 0.6 width gold-plated vs.
 no pattern processed gold-plated
 no holder

Note) Every item or numerical value indicated herein is measured by Shin-Etsu and out of guarantee.
 The quality of the connector, which has been already assembled, is out of guarantee.
 Please make sure to see about the purpose/conditions of use and practice your own test.
 Industrial ownership like patent doesn't guarantee the usage of the connector

Shin-Etsu

Shin-Etsu Polymer Co.,Ltd.

●Sales Unit Sales & Marketing Division I

TEL:+81-3-5289-3727 FAX:+81-3-5289-3722

Sotetsu Kandasudacho bldg. 1-9 Kanda-Sudacho, Chiyoda-ku,
 Tokyo 101-0041 Japan

●Osaka Branch TEL:+81-6-6350-1121 FAX:+81-6-6350-1288

●Nagoya Branch TEL:+81-52-581-4231 FAX:+81-52-581-2921

●Shin-Etsu Polymer America, Inc.

TEL:+1-510-623-1881 FAX:+1-510-623-1603

●Shin-Etsu Polymer Europe B.V.

TEL:+31-77-323-6000 FAX:+31-77-323-6001

●Shin-Etsu Polymer Hong Kong Co., Ltd.

TEL:+852-2377-9131 FAX:+852-2377-1673

●Shin-Etsu Polymer Singapore Pte. Ltd.

TEL:+65-6735-0007 FAX:+65-6735-0008

●Corporate Head Office

TEL:+81-3-5289-3712 FAX:+81-3-5289-3707

Sotetsu Kandasudacho bldg. 1-9 Kanda-Sudacho, Chiyoda-ku,
 Tokyo 101-0041 Japan