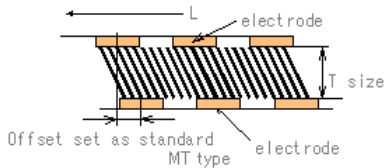


"MT" series of Shin-Etsu Inter-connector are for inspection of electronics components and semi-conductor packages.

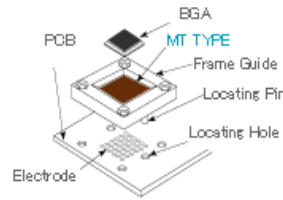
### ☆ Characteristics

- \* High durability and RF character due to inclined wires
- \* Ideal for high frequency testing with minimum: 0.15mm.
- \* "Redundancy in connections" (see below). It is not necessary to have precise alignment to inter-connector.
- \* Versatile in testing several kinds of pitches, and different kinds of packages due to high density contacts
- \* Projection of wire is available in case of the inspection in lower load.  
(Standard in case of 0.15mmT, 0.25mmT)
- \* Suitable for several package testing of QFN, LGA, BGA etc.

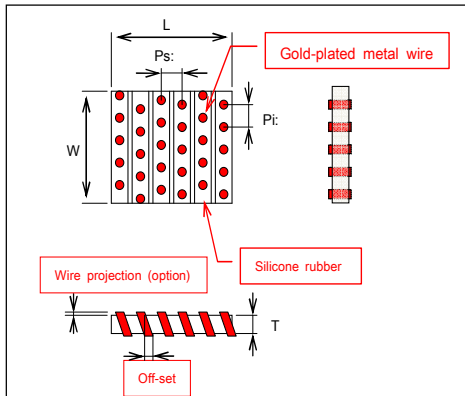
### ☆ Redundancy in connection



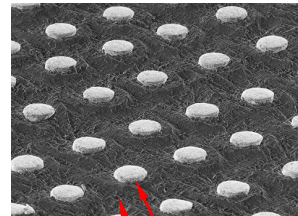
### ☆ Example of use



### ☆ MT Structure



### ☆ Appearance / custom cut shape(s) available



Gold-plated metal wire with projection treatment

Silicone rubber

### ☆ Size

Type	Dimension(mm)						Projection of wire
	Pi ( P )	Ps	L	W	T	Main-silicone	
MT	0.1	0.1	5 ~ 50	5 ~ 50	0.5 , 1.0 , 2.0	30	Option : MT-E
MT-2X	0.075	0.075					Option : MT-2X-E
MT-4X	0.05	0.05					Option : MT-4X-E
MT-6X	0.032	0.05					Option : MT-6X-E
MT-T-E	0.1	0.1	5 ~ 50	5 ~ 50	0.15 , 0.25	70	Standard
MT-T-2X-E	0.075	0.075					Standard
MT-T-4X-E	0.05	0.05					Standard
MT-T-6X-E	0.032	0.05					Standard

\* Off-set dimension is a half of "T" dimension.

\* Please contact us when you need out of above dimension list.

\* Gold plating can be formed on the tip of the wires except "6X" series.

\* In development: Thickness less than 0.15 mm