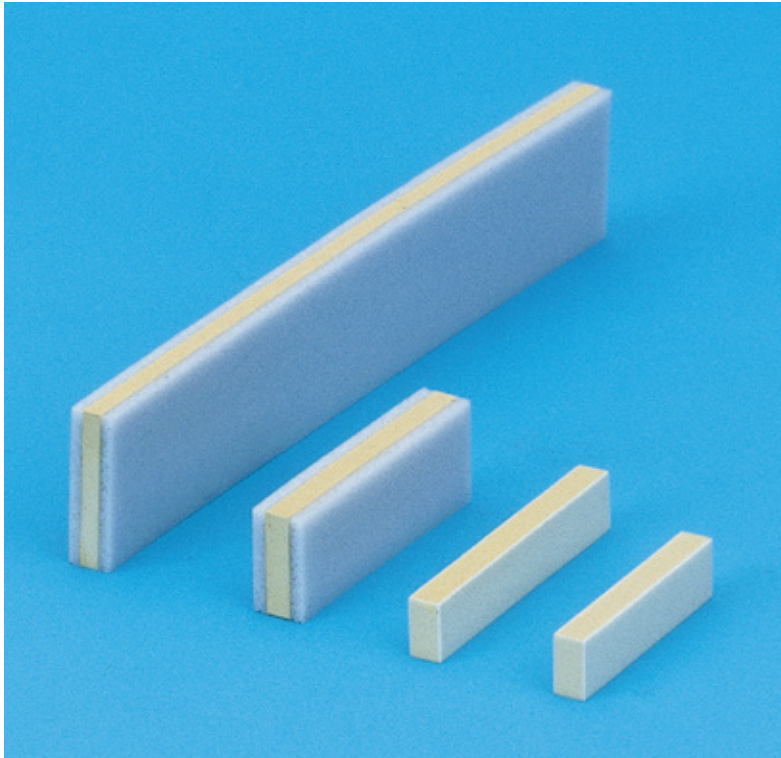


## Shin-Etsu Inter-Connector®

### MS TYPE

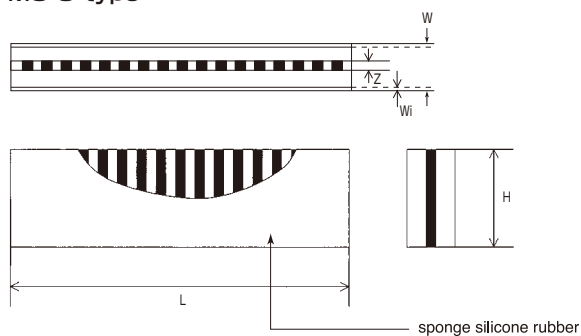


#### FEATURES

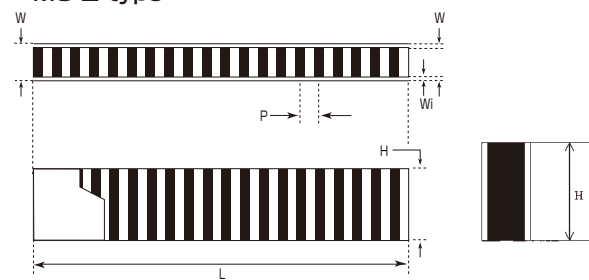
MS type is low resistance-type Inter-Connector using silver particles in the conductive material. This type of connector is superior in contact stability and ideal for connecting between LCD and PCB, PCBs and non-solderable electrical parts. MS type has alternatives of low load type, what is called MS-G and low resistance type with wide zebra, which is MS-Z.

#### OUTLINE DIMENSIONS

MS-G type



MS-Z type



#### DIMENSIONS AND TOLERANCES

Item		Unit	MS-G	MS-Z
Pitch	P	mm	0.10 ± 0.05	
Length	L	mm	3.0 ~ 30.0 ± 0.25	
High	H	mm	1.0 ~ 10.0 ± 0.10	0.5 ~ 10.0 ± 0.10
Width	W	mm	1.3 ~ 2.5 ± 0.10	0.6 ~ 1.6 ± 0.10
Core width	Z	mm	0.5 ~ 1.5	
Width of Insulation coat	Wi	mm	0.01	0.05

\* $H \geq W/2$

\*Gas barrier bag is the standard packing style.

\*Please refer to the MS type technical material when handling.

\*Design guide is available as a reference to determine dimensions.

\*MS-G spec.(0.4Z) is also available.

Shin-Etsu Inter-Connector has been registered in European Community, TM No. 000299016, and in the United States of America, TM No. 2078941.

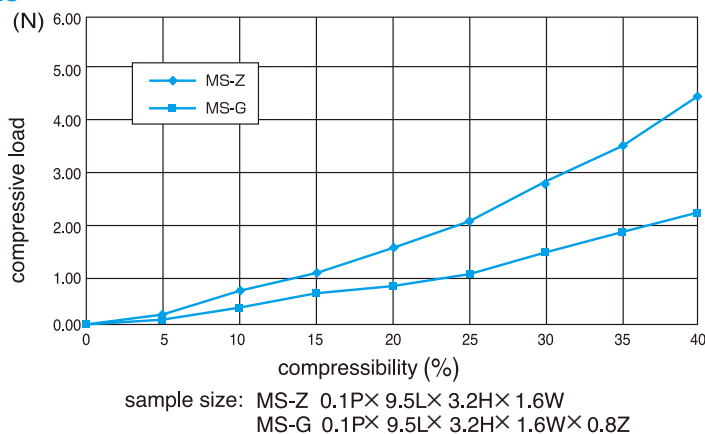
## BASIC PROPERTIES

Item	Unit	MS-G	MS-Z
Volume resistivity*	$\Omega \cdot m$	$1 \times 10^{-5}$	$1 \times 10^{-5}$
Insulation resistance*	M $\Omega$	$1 \times 10^3 \leq$	$1 \times 10^3 \leq$
Compression set	%	$10 \geq$	$10 \geq$
Operating temperature range	$^{\circ}C$	-25 ~ 85	-25 ~ 85

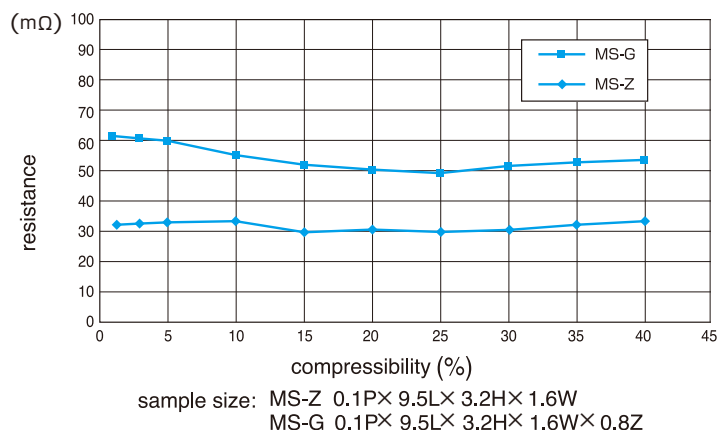
The test method is based upon JIS K 6249.

The test marked with \* is carried out with Shin-Etsu's own method.

## COMPRESSION CURVES



## RESISTANCE-COMPRESSIBILITY CURVES



**Note) Every item or numerical value indicated herein is measured by Shin-Etsu and out of guarantee.  
The quality of the connector, which has been already assembled, is out of guarantee.  
Please make sure to see about the purpose/conditions of use and practice your own test.  
Industrial ownership like patent doesn't guarantee the usage of the connector**

# Shin-Etsu

Shin-Etsu Polymer Co.,Ltd.

●Sales Unit Sales & Marketing Division I  
TEL : +81-3-5288-8411  
Ote Center bldg. 1-1-3 Otemachi, Chiyoda-ku,  
Tokyo 100-0004 Japan

●Osaka Branch TEL:+81-6-6350-1121 FAX:+81-6-6350-1288  
●Nagoya Branch TEL:+81-52-581-4231 FAX:+81-52-581-2921

●Shin-Etsu Polymer America, Inc.  
TEL:+1-510-623-1881 FAX:+1-510-623-1603  
●Shin-Etsu Polymer Europe B.V.  
TEL:+31-77-323-6000 FAX:+31-77-323-6001  
●Shin-Etsu Polymer Hong Kong Co., Ltd.  
TEL:+852-2377-9131 FAX:+852-2377-1673  
●Shin-Etsu Polymer Singapore Pte. Ltd.  
TEL:+65-6735-0007 FAX:+65-6735-0008

●Corporate Head Office  
TEL : +81-3-5288-8400  
Ote Center bldg. 1-1-3 Otemachi, Chiyoda-ku,  
Tokyo 100-0004 Japan