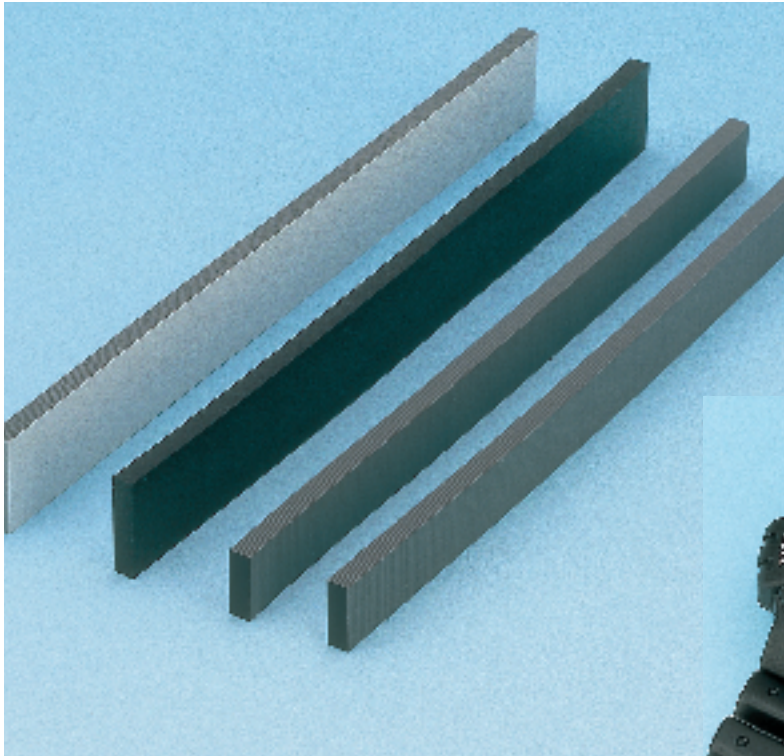


Shin-Etsu Inter-Connector®

S TYPE

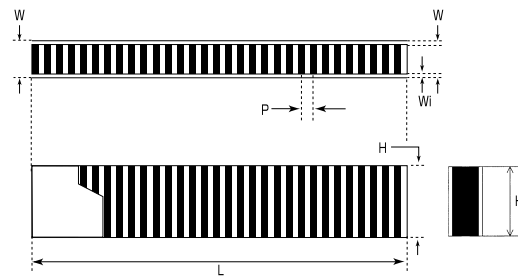
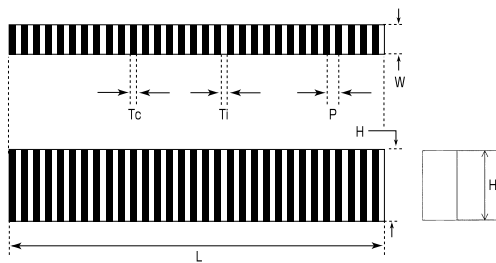


FEATURES

S-type Inter-Connector consists of alternate layers of conductive and insulation silicone rubber. This compression-type connector makes "random connection" possible with high reliability. This type of connector is applicable for the small-sized display used in watch or camera.



OUTLINE DIMENSIONS



DIMENSIONS AND TOLERANCES

Item		Unit	0.05 P type	0.10 P type	0.18 P type	0.25 P type
Pitch	P	mm	0.05±0.03	0.10±0.04	0.18±0.05	0.25±0.05
Length	L	mm	1.0~5.0±0.1	5.1~30.0±0.2	30.1~70.0±0.3	
			70.1~120.0±0.4	120.1~200.0±0.6	200.1~300.0±0.8	
Height*	H	mm	0.8~5.0±0.1		5.1~25.0+0.15/-0.1	
Width without coat			0.2~5.0±0.08			
Width with coat	W	mm	0.3~5.1±0.1			
Width of Insulation coat	Wi	mm	0.05±0.03			

* $H \geq W/2$

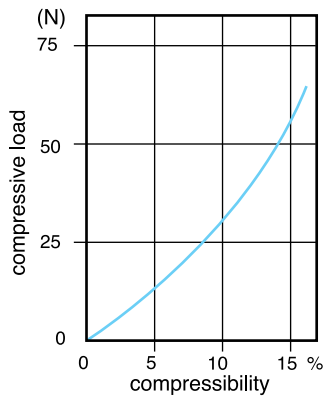
Shin-Etsu Inter-Connector has been registered in European Community, TM No. 000299016, and in the United States of America, TM No. 2078941.

BASIC PROPERTIES

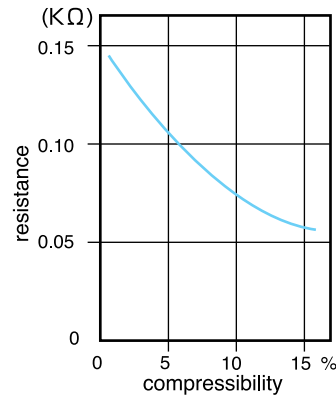
Item	Component	Unit	0.05 P type	0.10 P type · 0.18 P type · 0.25 P type
Specific gravity	Insulator		1.15	1.15
	Conductor		1.15	1.25
	Insulated both sides		1.15	1.15
Shore hardness A	Insulator	ISO7619 (TYPE A)	65~73	65~73
	Conductor		60~65	63~67
	Insulated both sides		65~73	65~73
Compression set	※	%	15~20	15~20
Volume resistivity	Insulator	Ω · cm	1×10^{14}	1×10^{14}
	Conductor		1.3	3~6
	Insulated both sides		1×10^{14}	1×10^{14}
Dielectric breakdown voltage	Insulator	kV/mm	23~27	23~27
	Insulated both sides		20~23	20~23
Insulation resistance(500V DC)	※	MΩ	$1 \times 10^3 \leq$	$1 \times 10^3 \leq$
Operating temperature range		°C	-25~85	-25~85

*The test is carried out with Shin-Etsu's own method.

COMPRESSION CURVES



sample size:0.10P×20.0L×2.4H×2.0W



sample size:0.10P×20.0L×2.4H×2.0W
electrode used: 0.6 width gold-plated vs.
no pattern processed gold-plated
no holder

Note) Every item or numerical value indicated herein is measured by Shin-Etsu and out of guarantee.
The quality of the connector, which has been already assembled, is out of guarantee.
Please make sure to see about the purpose/conditions of use and practice your own test.
Industrial ownership like patent doesn't guarantee the usage of the connector

Shin-Etsu

Shin-Etsu Polymer Co.,Ltd.

Shin-Etsu Polymer Co.,Ltd.:

3-5 Nihonbashi-honcho 4-chome, Chuo-ku, Tokyo 103-0023, Japan
TEL 81-3-3279-1712 FAX 81-3-3246-2529

Connector Division:

406-1, Yoshinocho 1-chome, Omiya-shi Saitama 330-0031, Japan
TEL 81-48-652-5913 FAX 81-48-652-5919

Shin-Etsu Polymer America Inc.

5600 Mowry School Road Suite 320 Newark, CA 94560, U.S.A.
TEL 1-510-623-1881 FAX 1-510-623-1603

Shin-Etsu Polymer America,Inc.Atlanta Branch:

333 North Point Center East Suite 150 Alpharetta, GA 30022, U.S.A.
TEL 1-770-346-8686 FAX 1-770-346-8750

Shin-Etsu Polymer Europe B.V.:

Groot Bollerweg 10, 5928 NS Venlo, The Netherlands
TEL 31-77-323-6000 FAX 31-77-323-6001

Shin-Etsu Polymer Co.,Ltd.:

Hong Kong Branch

Suite1602, 16/F, Tower 6, China Hong Kong City, 33 Canton Road, Tsim Sha Tsui, Kowloon, Hong Kong
TEL 852-2377-9131 FAX 852-2377-1673

Shin-Etsu Polymer Shanghai Co.,Ltd.:

Section A, Floor 3, 55 Xiya RD, Wai Gao Qiao Free Trade Zone, Shanghai, 200137, China
TEL 86-21-5046-1153 FAX86-21-5046-1665

Shin-Etsu Polymer Co.,Ltd.:

Singapore Branch

360 Orchard Road #12-10, International Building, Singapore 238869
TEL 65-735-0007 FAX65-735-0008

Shin-Etsu Polymer(Malaysia)Sdn,Bhd.:

Lot 52, Japan Sepintas 26/13, Kawasan, Perindustrian Hicom, 4000 Shan Alan, Selangor Darul Ehasan, Malaysia
TEL 60-3-5111161 FAX 60-3-5111181

H400301