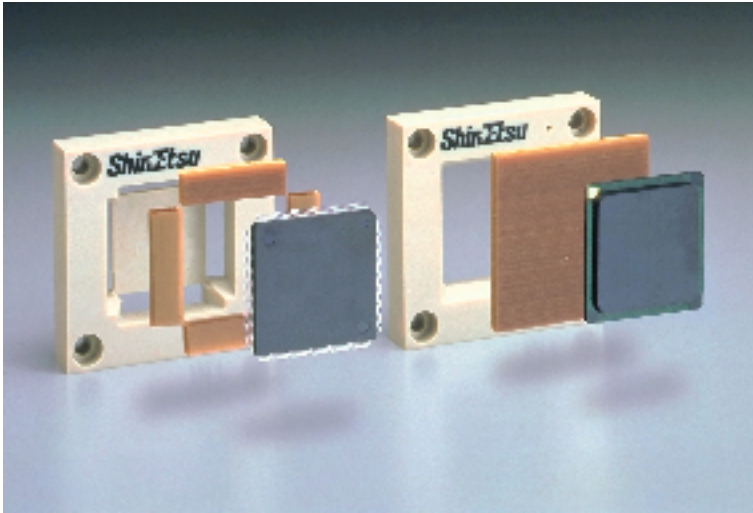


Shin-Etsu Inter-Connector®

MT, MT -SOFT, MT -4X type



FEATURES

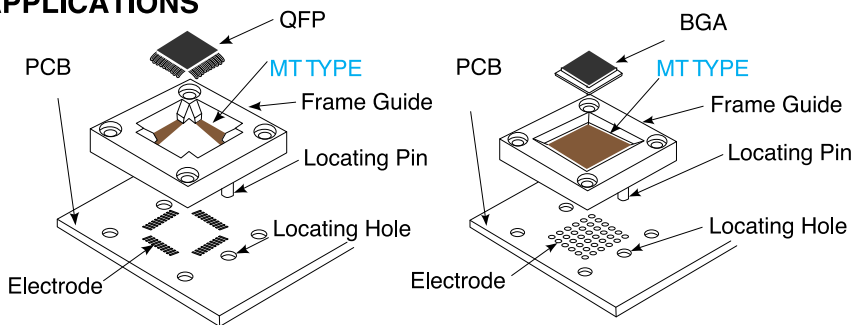
MT-type series are anisotropic conductive sheet type, which consists of soft silicone rubber and of gold-plated metal filaments embedded densely into it. This type of Inter-Connector is suitable for inspecting and connecting IC packages such as BGA, QFP or SOP.

Since MT-4X type has 4-time metal density, it can be used to CSP.

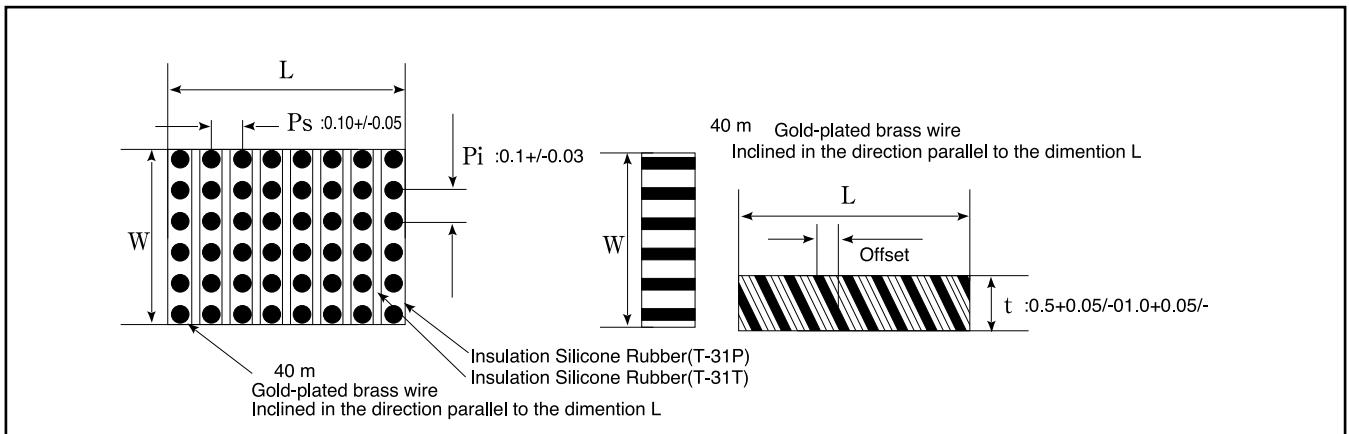
Especially, MT series are superior in transmitting high cycle.

■ MT series Operating Temperature Range:
-35-100 degrees °C

APPLICATIONS



OUTLINE DIMENSIONS



DIMENSIONAL SPECIFICATIONS

Pitch (mm)	4X	Pi:0.10±0.03×Ps:0.10±0.05		
		Pi:0.05±0.03×Ps:0.05±0.03		
Length (mm)		Max:50.0±1.0	Min:5.0±0.5	
Width (mm)		Max:50.0±1.0	Min:5.0±0.5	
Thickness (mm)		0.5+0.05/-0	1.0+0.05/-0	2.0+0.05/-0
Offset (mm)		0.25±0.1	0.5±0.1	1.0±0.1

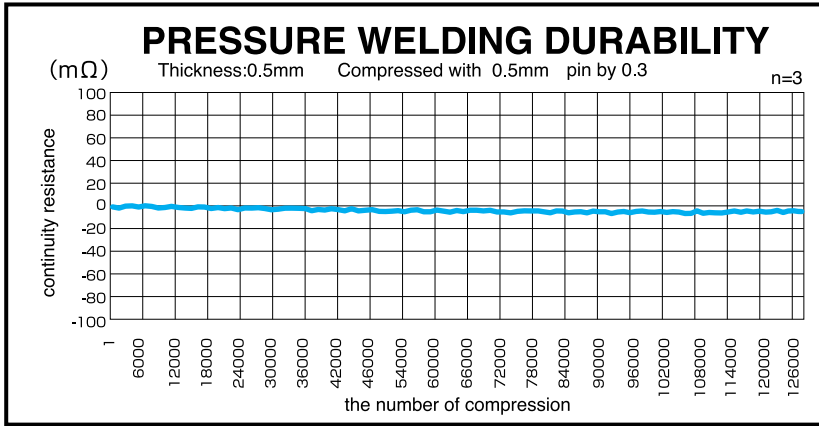
*An optional type whose contact surfaces has been improved in point of absorptivity.

*MT-SOFT type has no 0.5mm thickness.

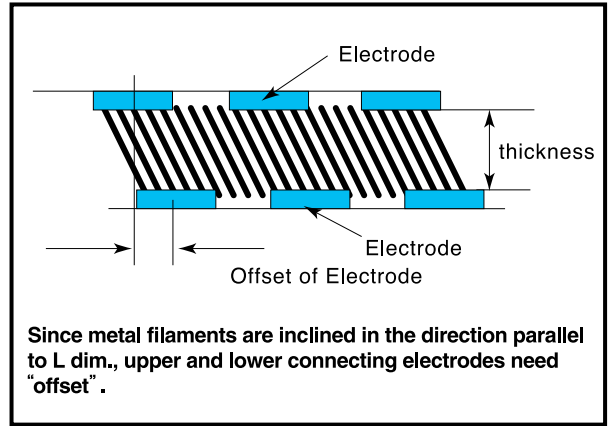
*Please consult with us for larger size than 50L×50W.

Shin-Etsu Inter-Connector has been registered in European Community, TM No. 000299016, and in the United States of America, TM No. 2078941.

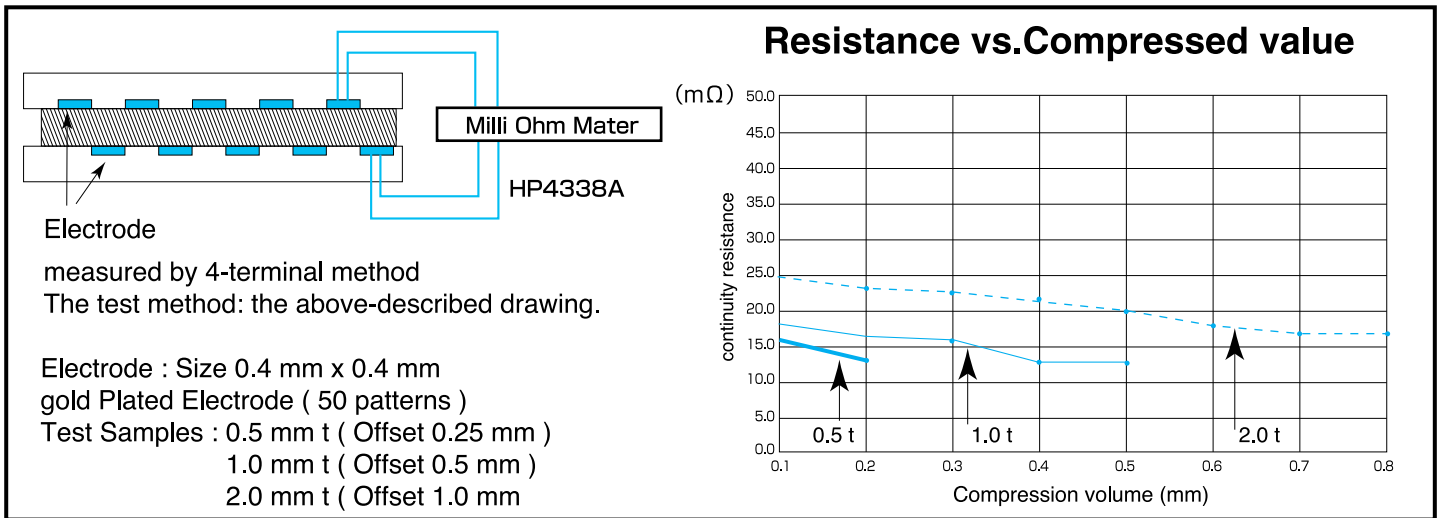
DURABILITY



OFFSET TO CONNECTING ELECTRODE

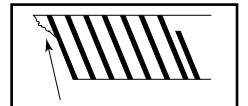


CONTINUITY RESISTANCE



Attentions

- A frame is temporarily fixed with a connector.
- A small amount of silicone will remain on the inspected (IC package, etc.), connected with MT-type connector.
- When the inspected (IC package, etc.) with soldered electrodes is pressured and welded to MT-type connector, the solder can adhere to the metal filament part of the connector.
- When the inspected (IC package, etc.) is pressured and welded to MT-type connector, it can be absorbed to the connector.
- Attachments such as dirt, dust and the other alien substances will remarkably increase the contact resistance of the connector.
- A cross section cut through L direction will be inclined. See the right illustration.



Attentions

Note) Every item or numerical value indicated herein is measured by Shin-Etsu and out of guarantee.
The quality of the connector, which has been already assembled, is out of guarantee.
Please make sure to see about the purpose/conditions of use and practice your own test.
Industrial ownership like patent doesn't guarantee the usage of the connector

Shin-Etsu

Shin-Etsu Polymer Co.,Ltd.

Shin-Etsu Polymer Co.,Ltd.:
3-5 Nihonbashi-honcho 4-chome, Chuo-ku, Tokyo 103-0023, Japan
TEL 81-3-3279-1712 FAX 81-3-3246-2529

Connector Division:
406-1, Yoshinocho 1-chome, Omiya-shi Saitama 330-0031, Japan
TEL 81-48-652-5913 FAX 81-48-652-5919

Shin-Etsu Polymer America Inc.
5600 Mowry School Road Suite 320 Newark, CA 94560, U.S.A.
TEL 1-510-623-1881 FAX 1-510-623-1603

Shin-Etsu Polymer America,Inc.Atlanta Branch:
333 North Point Center East Suite 150 Alpharetta, GA 30022, U.S.A.
TEL 1-770-346-8686 FAX 1-770-346-8750

Shin-Etsu Polymer Europe B.V.:
Groot Bollerweg 10, 5928 NS Venlo, The Netherlands
TEL 31-77-323-6000 FAX 31-77-323-6001

Shin-Etsu Polymer Co.,Ltd.:
Hong Kong Branch
Suite1602, 16/F, Tower 6, China Hong Kong City, 33 Canton Road, Tsim Sha Tsui, Kowloon, Hong Kong
TEL 852-2377-9131 FAX 852-2377-1673

Shin-Etsu Polymer Shanghai Co.,Ltd.:
Section A, Floor 3, 55 Xiya RD, Wai Gao Qiao Free Trade Zone, Shanghai, 200137, China
TEL 86-21-5046-1153 FAX86-21-5046-1665

Shin-Etsu Polymer Co.,Ltd.:
Singapore Branch
360 Orchard Road #12-10, International Building, Singapore 238869
TEL 65-735-0007 FAX65-735-0008

Shin-Etsu Polymer(Malaysia)Sdn,Bhd.:
Lot 52, Japan Sepintas 26/13, Kawasan, Perindustrian Hicom, 4000 Shan Alan, Selangor Darul Ehasan, Malaysia
TEL 60-3-5111161 FAX 60-3-5111181