

## Shin-Etsu Inter-Connector®

### GB-E TYPE

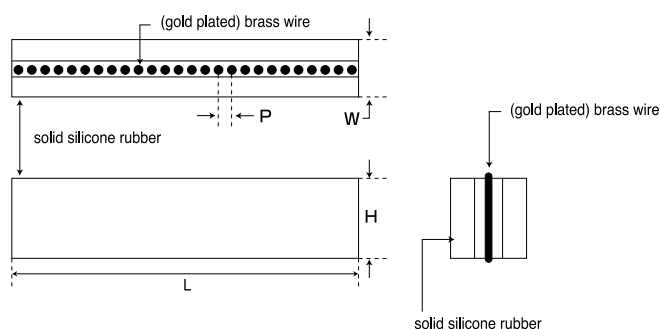


#### FEATURES

GB-E-type Inter-Connector is a compression type, which consists of gold-plated filaments lined in the conductive part and of insulating silicone rubber on both sides. This type connector makes stable connection possible with lower resistance.

GB-E type could replace soldering and also be used for PCBs, which need current capacity.

#### OUTLINE DIMENSIONS



#### DIMENSIONS AND TOLERANCES

Item		Unit	GB-E type		
Pitch	P	mm	0.05+0.03/-0.01	0.1±0.05	0.2±0.05
Length	L	mm	2.0~ 25.0±0.2	25.1~ 50.0±0.3	
			50.1~ 80.0±0.5	80.1~ 120.0±0.8	
			120.1~ 150.0±1.0	150.1~ 200.0±1.3	
			200.1~ 250.0±1.6		
Height*	H	mm	1.0~ 5.0±0.1	5.1~ 10.0±0.15	10.1~ 20.0±0.2
Width	W	mm	1.0~ 2.4±0.1	2.5~ 4.0±0.15	
Filament diameter	μm		30	40	40

Special design is available on request.

\*H≥W/2

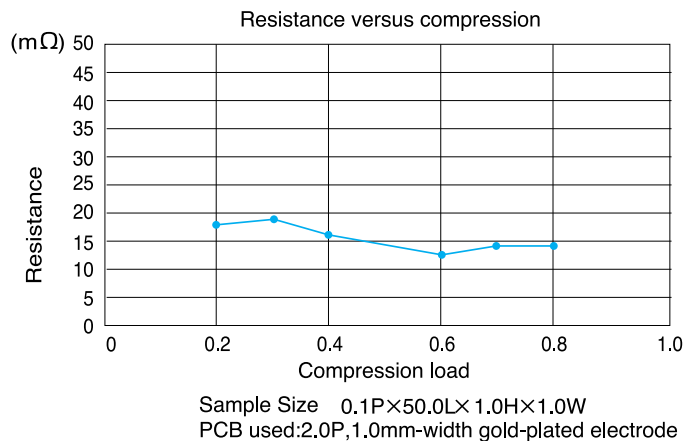
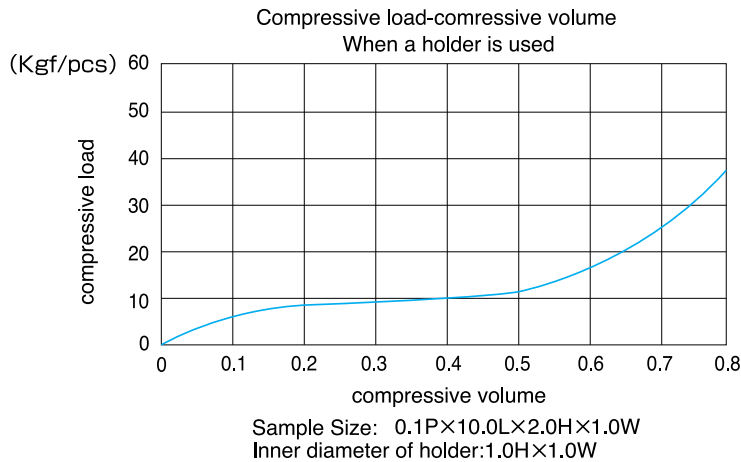
Shin-Etsu Inter-Connector has been registered in European Community, TM No. 000299016, and in the United States of America, TM No. 2078941.

## BASIC PROPERTIES

Item	Unit	Values
Contact resistance*	$\Omega$	$\leq 0.1$
Current carrying capacity	mA	500
Insulation resistance(500V DC)	M $\Omega$	$1 \times 10^3 \leq$
Operating temperature range	$^{\circ}\text{C}$	-25~85

\*The test is carried out with Shin-Etsu's own method.

## COMPRESSION CURVES



**Note)** Every item or numerical value indicated herein is measured by Shin-Etsu and out of guarantee.  
The quality of the connector, which has been already assembled, is out of guarantee.  
Please make sure to see about the purpose/conditions of use and practice your own test.  
Industrial ownership like patent doesn't guarantee the usage of the connector

# Shin-Etsu

Shin-Etsu Polymer Co.,Ltd.

### Shin-Etsu Polymer Co.,Ltd.:

3-5 Nihonbashi-honcho 4-chome, Chuo-ku, Tokyo 103-0023, Japan  
TEL 81-3-3279-1712 FAX 81-3-3246-2529

### Connector Division:

406-1, Yoshinocho 1-chome, Omiya-shi Saitama 330-0031, Japan  
TEL 81-48-652-5913 FAX 81-48-652-5919

### Shin-Etsu Polymer America Inc.

5600 Mowry School Road Suite 320 Newark, CA 94560, U.S.A.  
TEL 1-510-623-1881 FAX 1-510-623-1603

### Shin-Etsu Polymer America,Inc.Atlanta Branch:

333 North Point Center East Suite 150 Alpharetta, GA 30022, U.S.A.  
TEL 1-770-346-8686 FAX 1-770-346-8750

### Shin-Etsu Polymer Europe B.V.:

Groot Bollerweg 10, 5928 NS Venlo, The Netherlands  
TEL 31-77-323-6000 FAX 31-77-323-6001

### Shin-Etsu Polymer Co.,Ltd.:

#### Hong Kong Branch

Suite1602, 16/F, Tower 6, China Hong Kong City, 33 Canton Road, Tsim Sha Tsui, Kowloon, Hong Kong  
TEL 852-2377-9131 FAX 852-2377-1673

#### Shin-Etsu Polymer Shanghai Co.,Ltd.:

Section A, Floor 3, 55 Xiya RD, Wai Gao Qiao Free Trade Zone, Shanghai, 200137, China  
TEL 86-21-5046-1153 FAX86-21-5046-1665

#### Shin-Etsu Polymer Co.,Ltd.:

##### Singapore Branch

360 Orchard Road #12-10, International Building, Singapore 238869  
TEL 65-735-0007 FAX65-735-0008

#### Shin-Etsu Polymer(Malaysia)Sdn,Bhd.:

Lot 52, Japan Sepintas 26/13, Kawasan, Perindustrian Hicom, 4000 Shan Alan, Selangor Darul Ehasan, Malaysia  
TEL 60-3-51111161 FAX 60-3-51111181

H400301